

Note: This is Online Appendix 2 of Raimi, R. & Phiri, A., 2024, 'Impact of malnutrition on education inequality in Africa: A partial wavelet coherence analysis', *South African Journal of Economic and Management Sciences* 27(1), a5268. <https://doi.org/10.4102/sajems.v27i1.5268>

Online Appendix 2: Partial wavelet coherence results

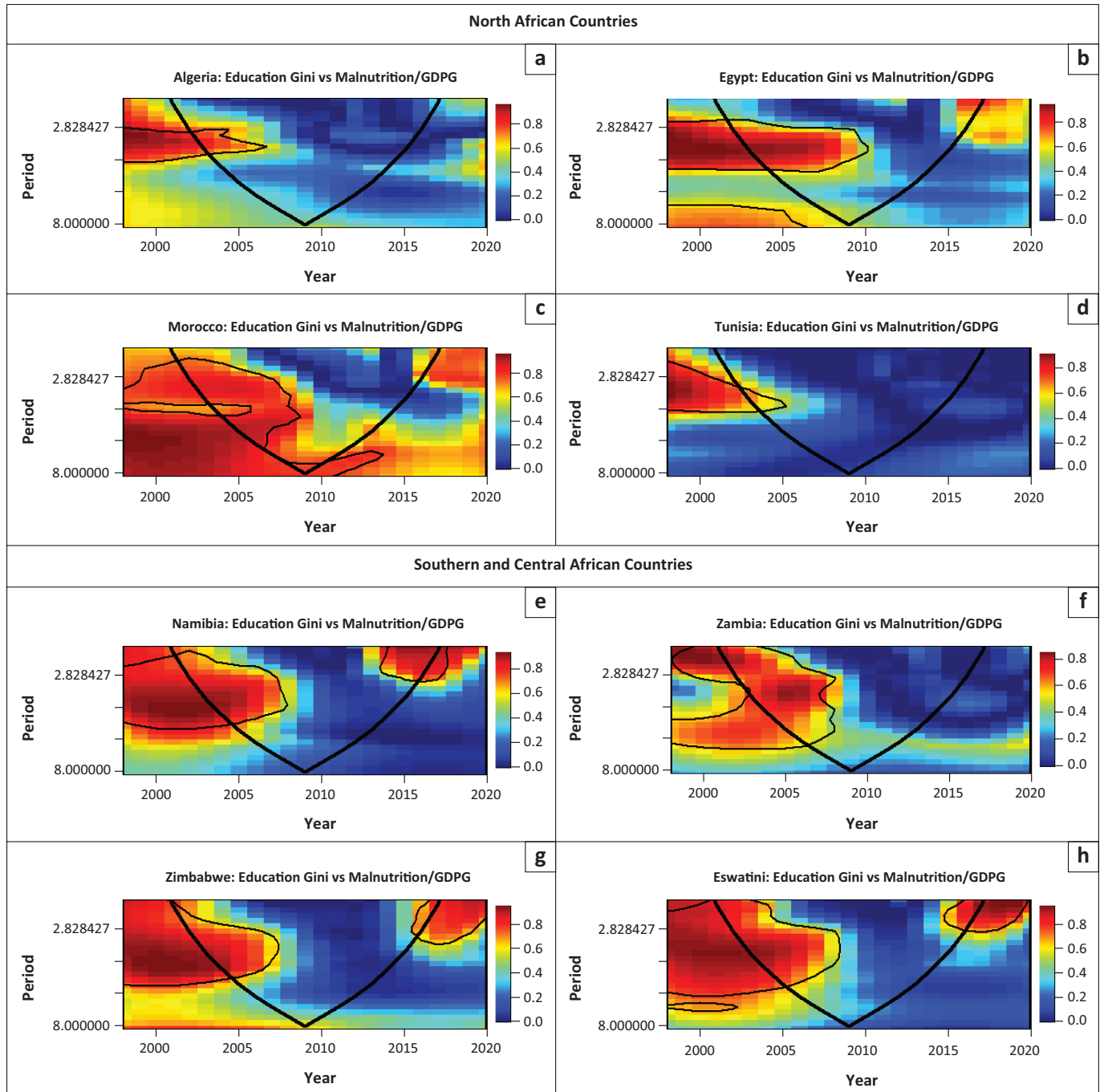


FIGURE 1–A2: Partial wavelet coherence between education inequality and malnutrition: (a) Algeria; (b) Egypt; (c) Morocco; (d) Tunisia; (e) Namibia; (f) Zambia; (g) Zimbabwe; (h) Eswatini; (i) Lesotho; (j) Botswana; (k) South Africa; (l) Cameroon; (m) Rwanda; (n) Mauritius; (o) Uganda; (p) Mozambique; (q) Malawi; (r) Tanzania; (s) Kenya; (t) Burundi; (u) Benin; (v) Gambia; (w) Ghana; (x) Cote d’Ivoire; (y) Mauritania; (z) Mali; (aa) Liberia; (ab) Senegal.

Figure 1-A2 continues on the next page →

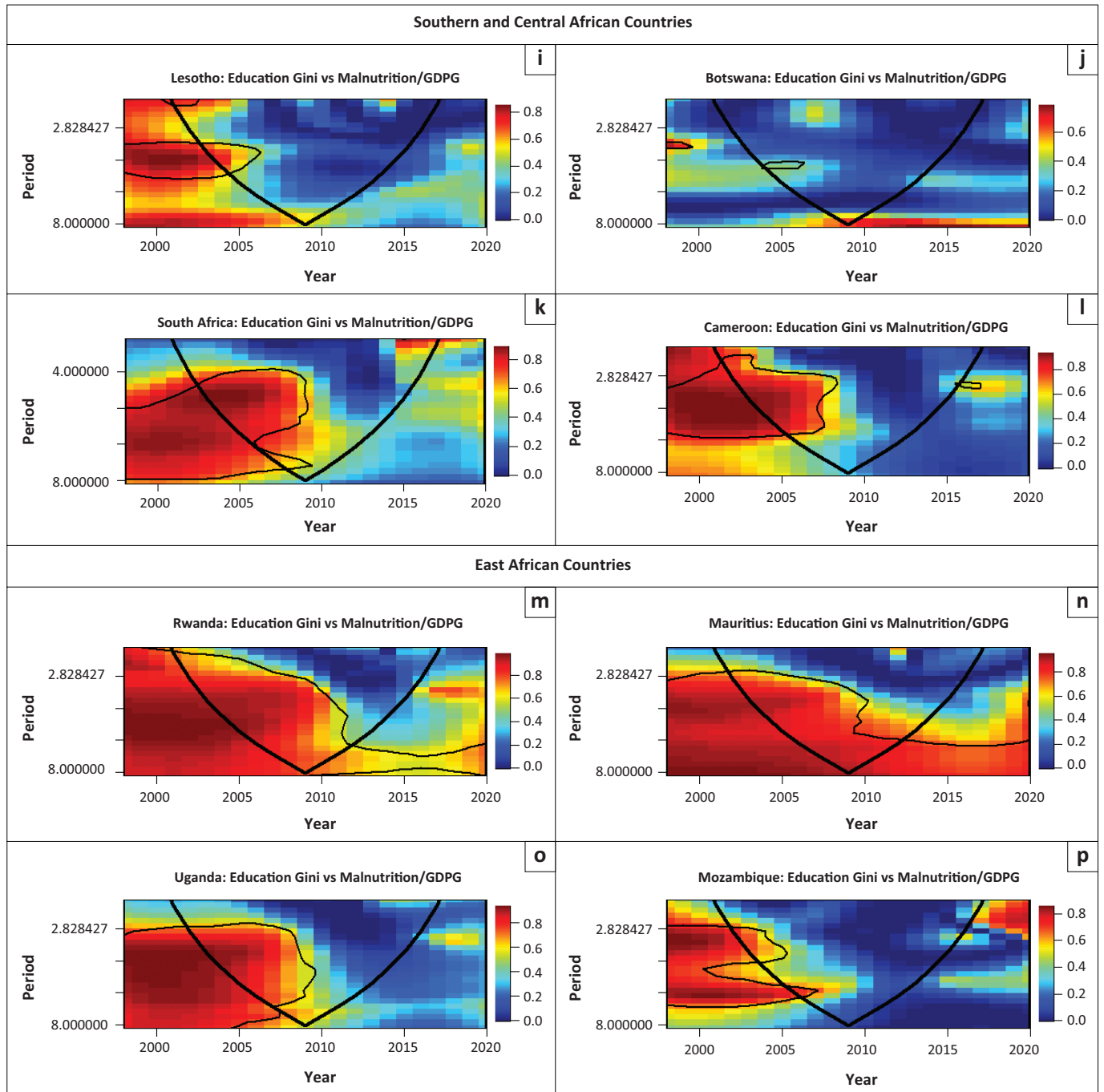


FIGURE 1–A2 (Continues...): Partial wavelet coherence between education inequality and malnutrition: (a) Algeria; (b) Egypt; (c) Morocco; (d) Tunisia; (e) Namibia; (f) Zambia; (g) Zimbabwe; (h) Eswatini; (i) Lesotho; (j) Botswana; (k) South Africa; (l) Cameroon; (m) Rwanda; (n) Mauritius; (o) Uganda; (p) Mozambique; (q) Malawi; (r) Tanzania; (s) Kenya; (t) Burundi; (u) Benin; (v) Gambia; (w) Ghana; (x) Cote d’Ivoire; (y) Mauritania; (z) Mali; (aa) Liberia; (ab) Senegal.

Figure 1-A2 continues on the next page →

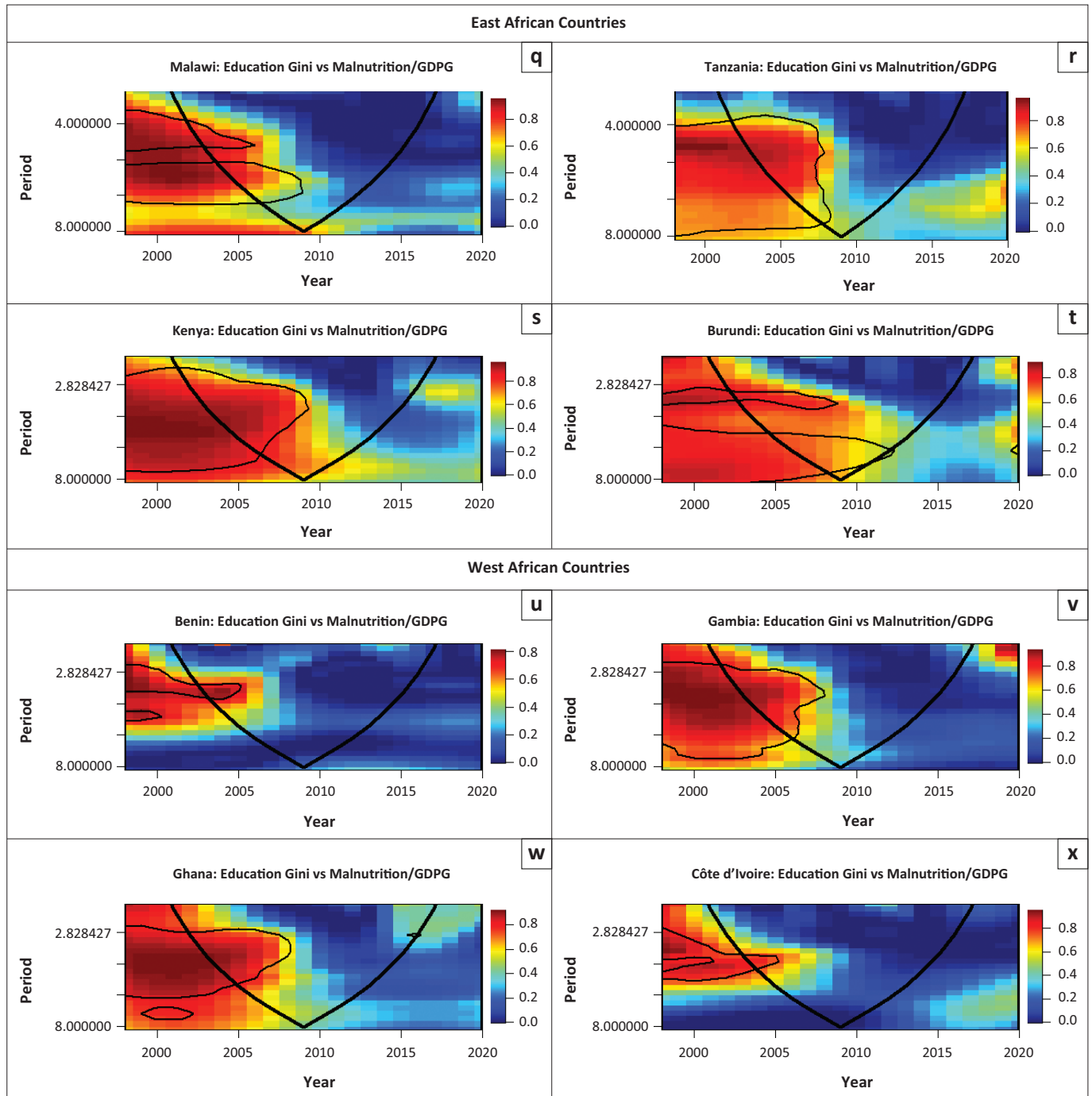


FIGURE 1-A2 (Continues...): Partial wavelet coherence between education inequality and malnutrition: (a) Algeria; (b) Egypt; (c) Morocco; (d) Tunisia; (e) Namibia; (f) Zambia; (g) Zimbabwe; (h) Eswatini; (i) Lesotho; (j) Botswana; (k) South Africa; (l) Cameroon; (m) Rwanda; (n) Mauritius; (o) Uganda; (p) Mozambique; (q) Malawi; (r) Tanzania; (s) Kenya; (t) Burundi; (u) Benin; (v) Gambia; (w) Ghana; (x) Cote d'Ivoire; (y) Mauritania; (z) Mali; (aa) Liberia; (ab) Senegal.

Figure 1-A2 continues on the next page →

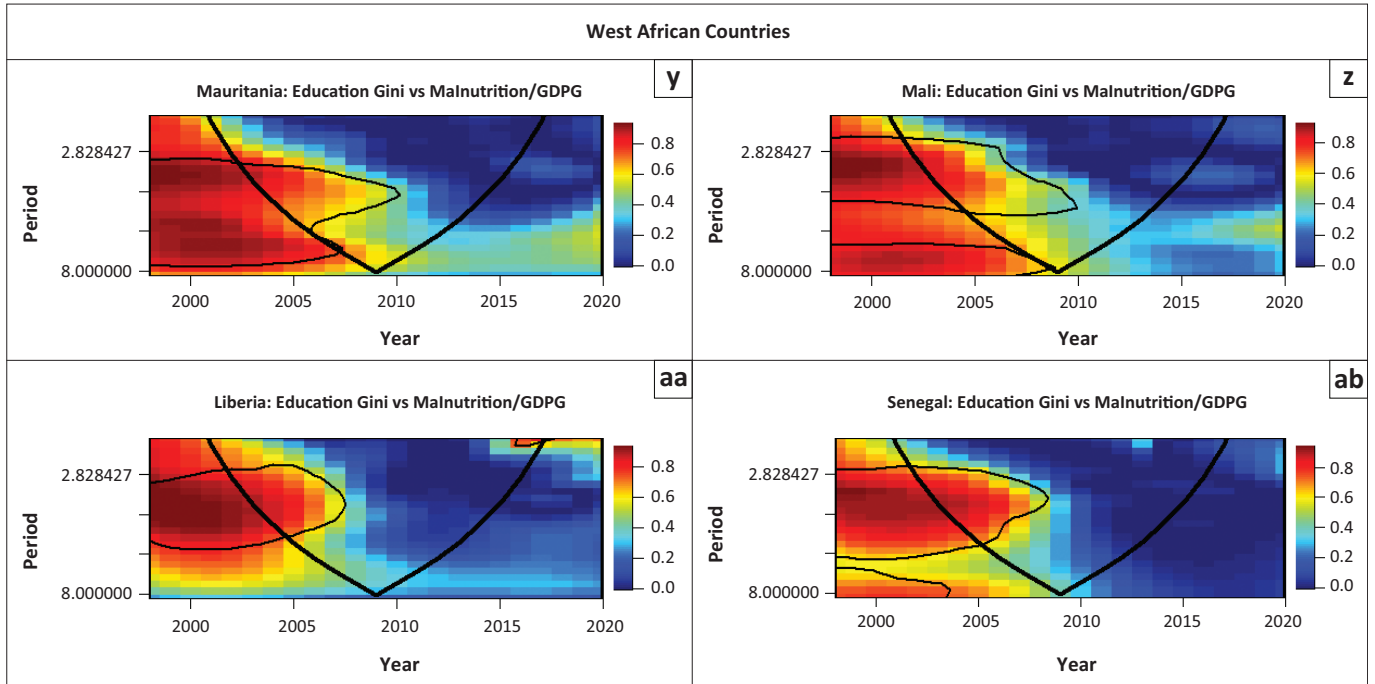


FIGURE 1–A2 (Continues...): Partial wavelet coherence between education inequality and malnutrition: (a) Algeria; (b) Egypt; (c) Morocco; (d) Tunisia; (e) Namibia; (f) Zambia; (g) Zimbabwe; (h) Eswatini; (i) Lesotho; (j) Botswana; (k) South Africa; (l) Cameroon; (m) Rwanda; (n) Mauritius; (o) Uganda; (p) Mozambique; (q) Malawi; (r) Tanzania; (s) Kenya; (t) Burundi; (u) Benin; (v) Gambia; (w) Ghana; (x) Cote d'Ivoire; (y) Mauritania; (z) Mali; (aa) Liberia; (ab) Senegal.